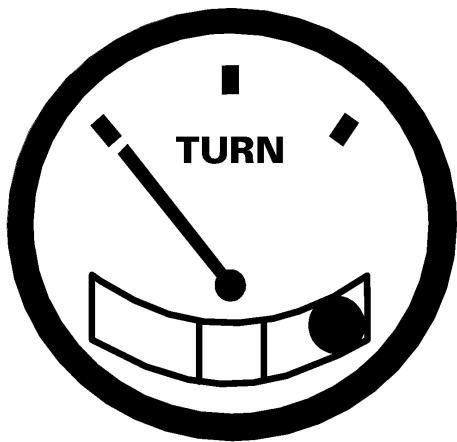
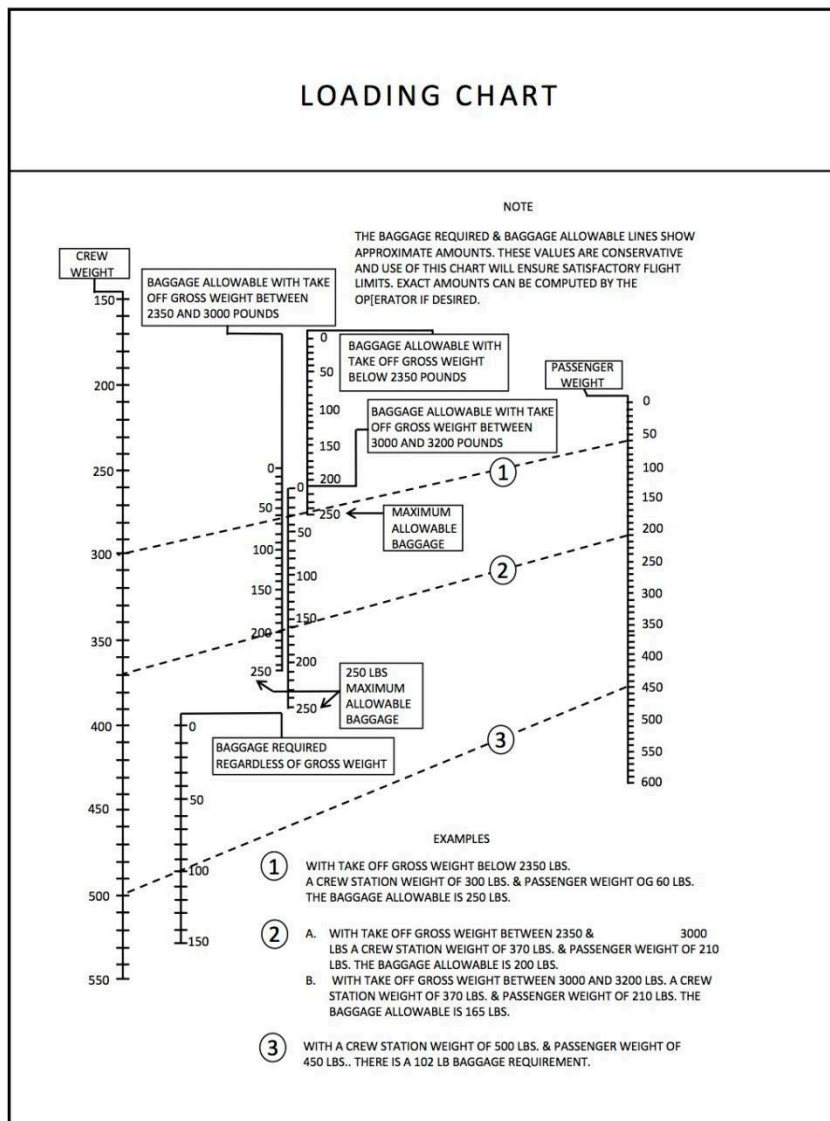


Appendix # 1



Appendix # 2

Section 4 206B FLIGHT MANUAL Manufacturers
 BHT-206B-FM-1 Data



Appendix # 3

General Information Navigation Trip Ranger Camp – Cordova

This portion of the examination is based on a flight from a **Ranger Camp** to the town of **Cordova** to pick up one passenger. The flight route has been selected to test navigational knowledge both on and off airways.

A single engine turbine helicopter is to be used for the flight. The flight is to be conducted in accordance with visual flight rules. The weather is considered to be above VFR minima for the duration of the flight.

The VFR Navigation Chart (VNC) for the Winnipeg area is provided and should be used to plan the trip.

The locations of the places needed for the trip are:

RANGER CAMP	N 50 42 00 W 99 57 00
CORDOVA	N 50 08 00 W 99 43 00
WINNIPEG	N 49 54 39 W 97 14 35

Distances are given in nautical miles and speeds are in knots.

The first leg is flown at **3,500 Ft.** and because you checked the weather prior to departing, you do the second leg at **2,500 Ft.**

Indicated airspeed is **95 knots.**

True Track for the first leg is **188°.**

Winds for the trip are **300°** at **20 knots.**

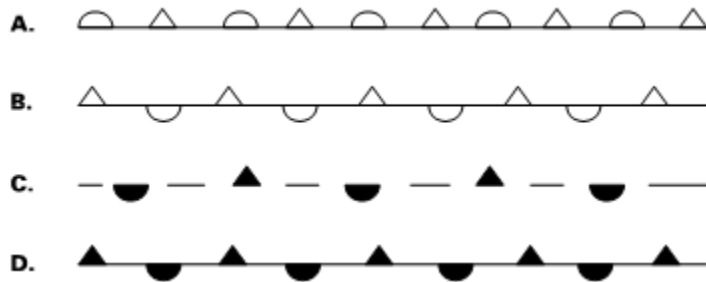
Fuel per hour is **23.0 U.S.** gallons.

Total fuel capacity is **76.0 U.S.** gallons.

Compass Correction Card:

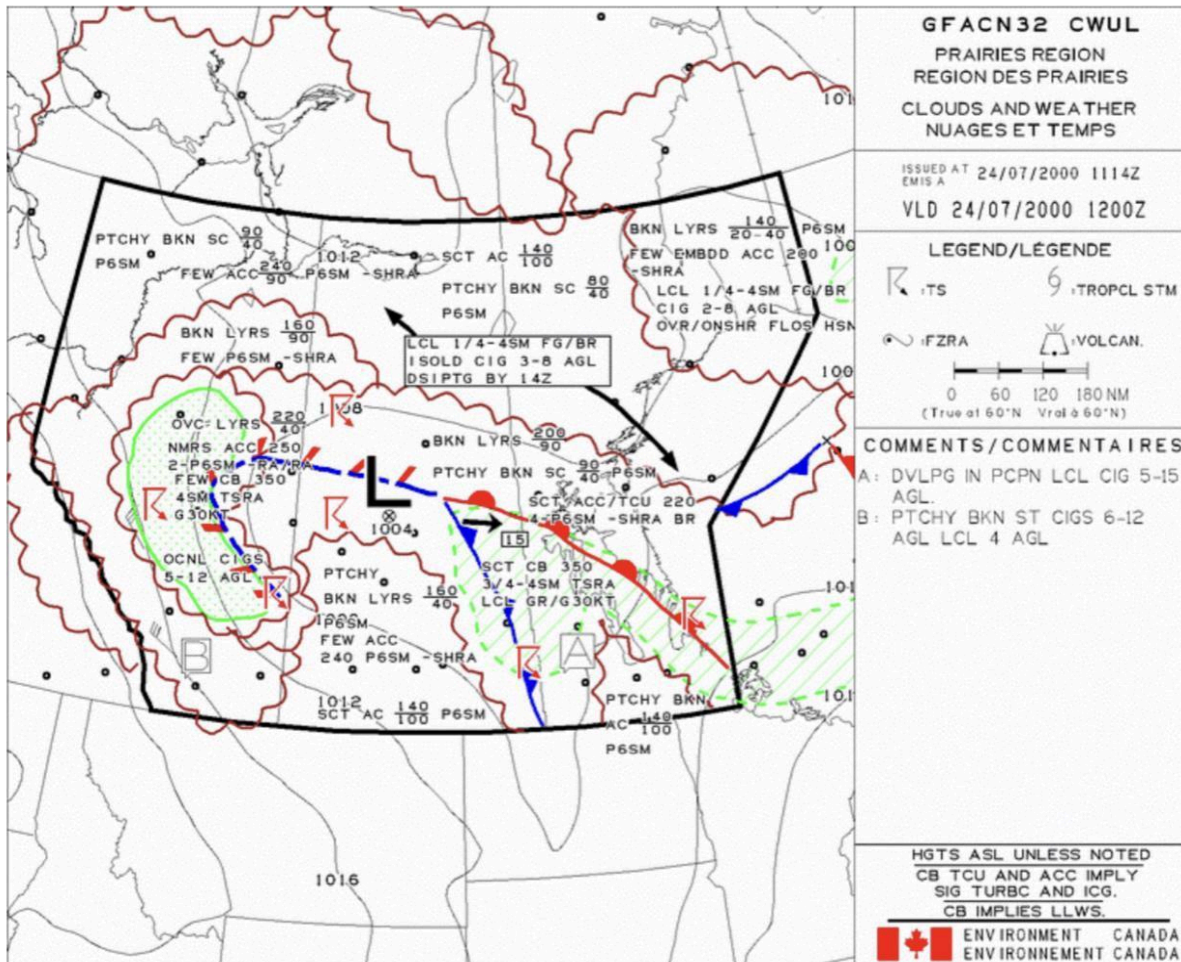
FOR	360	030	060	090	120	150	180	210	240	270	300	330
STEER	001	029	058	088	118	149	180	211	244	273	302	331

Appendix # 7



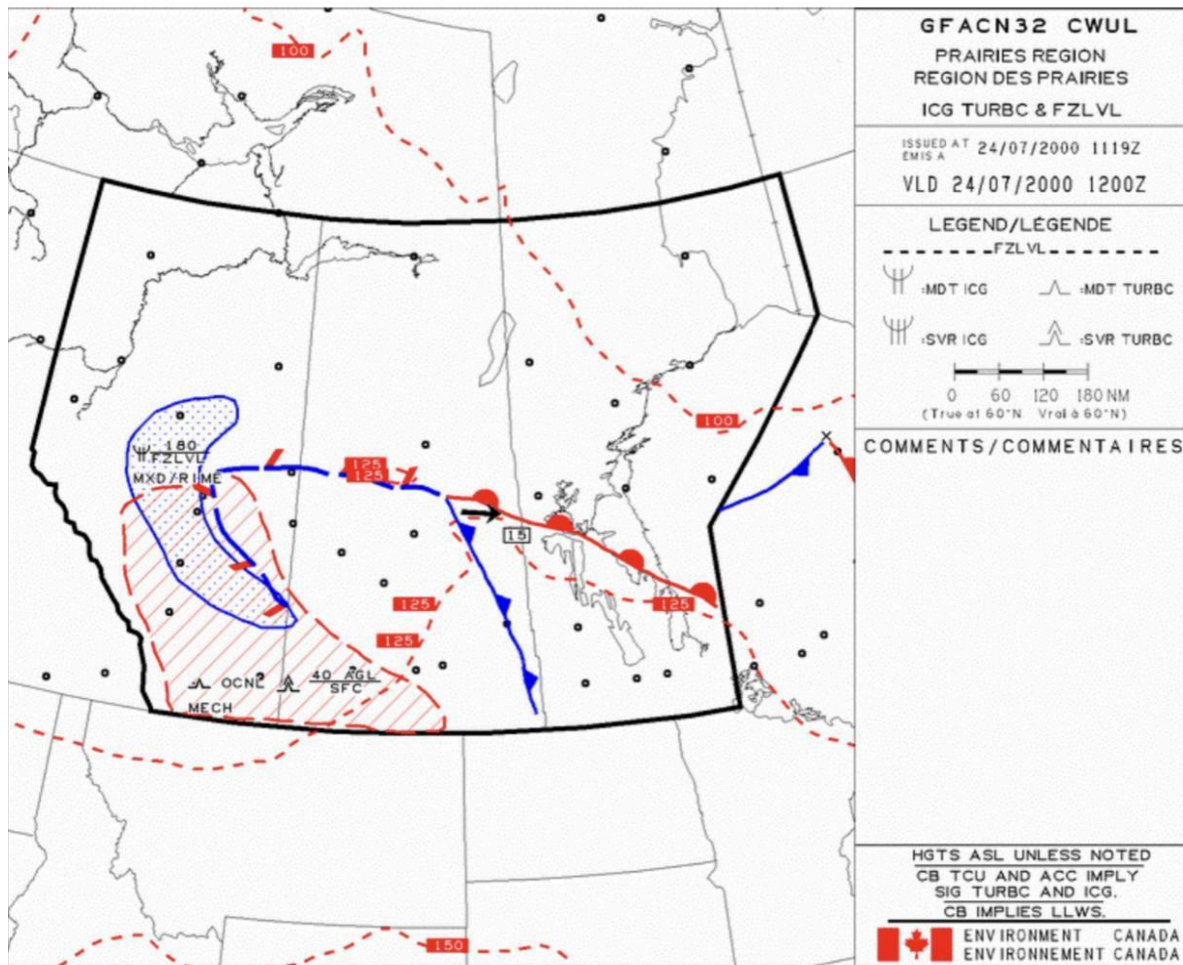
Appendix # 8

GFA (Page 1 of 6)



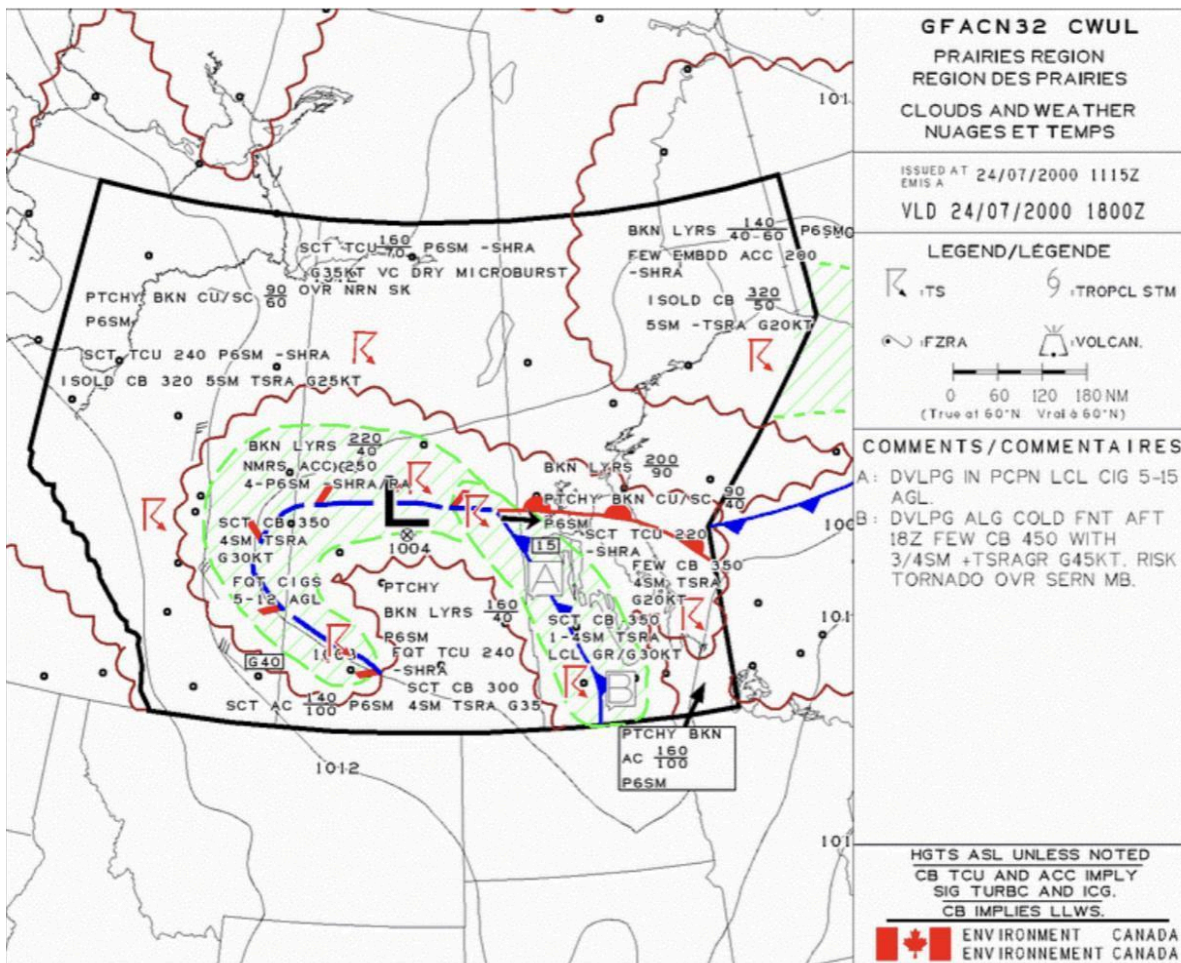
Appendix # 8

GFA (Page 2 of 6)



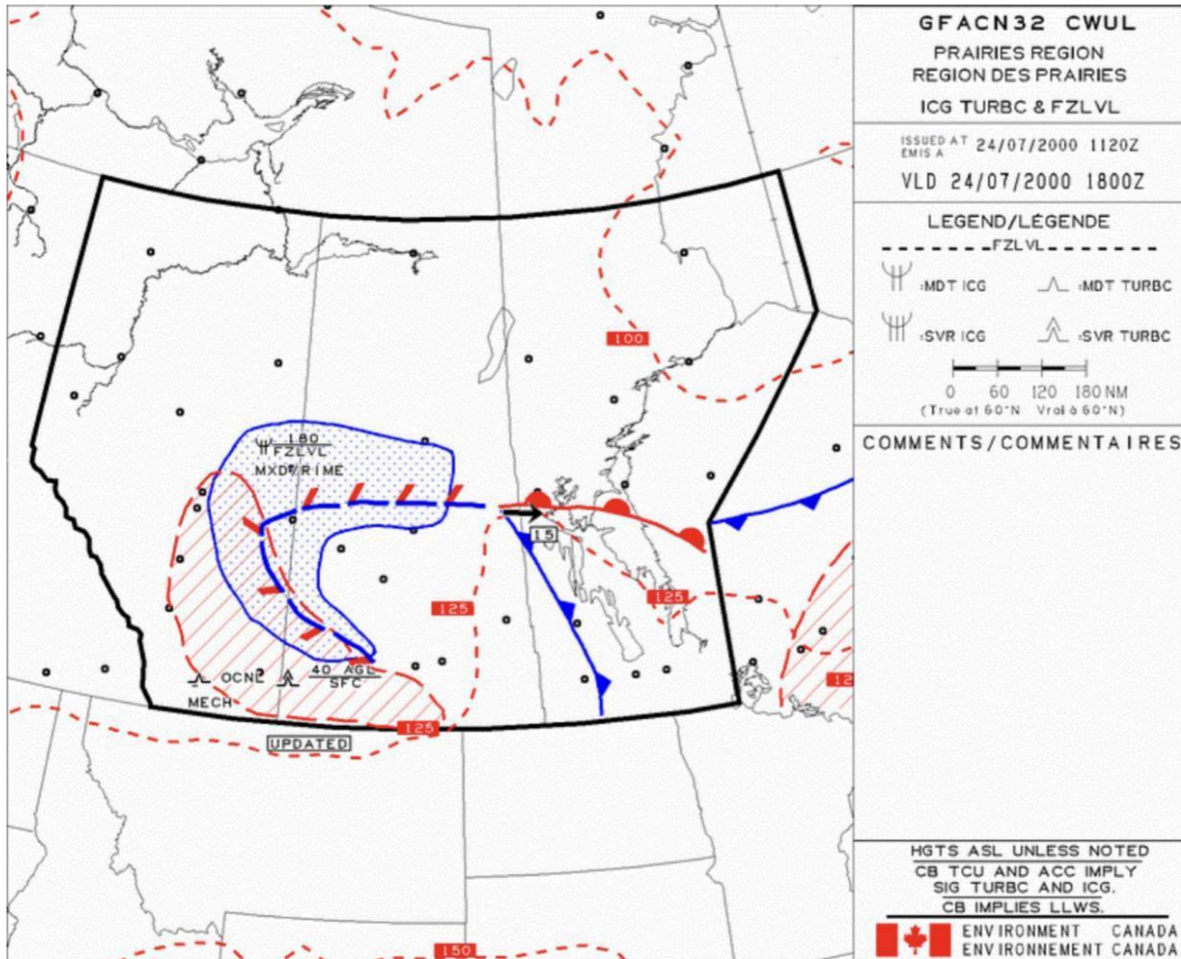
Appendix # 8

GFA (Page 3 of 6)



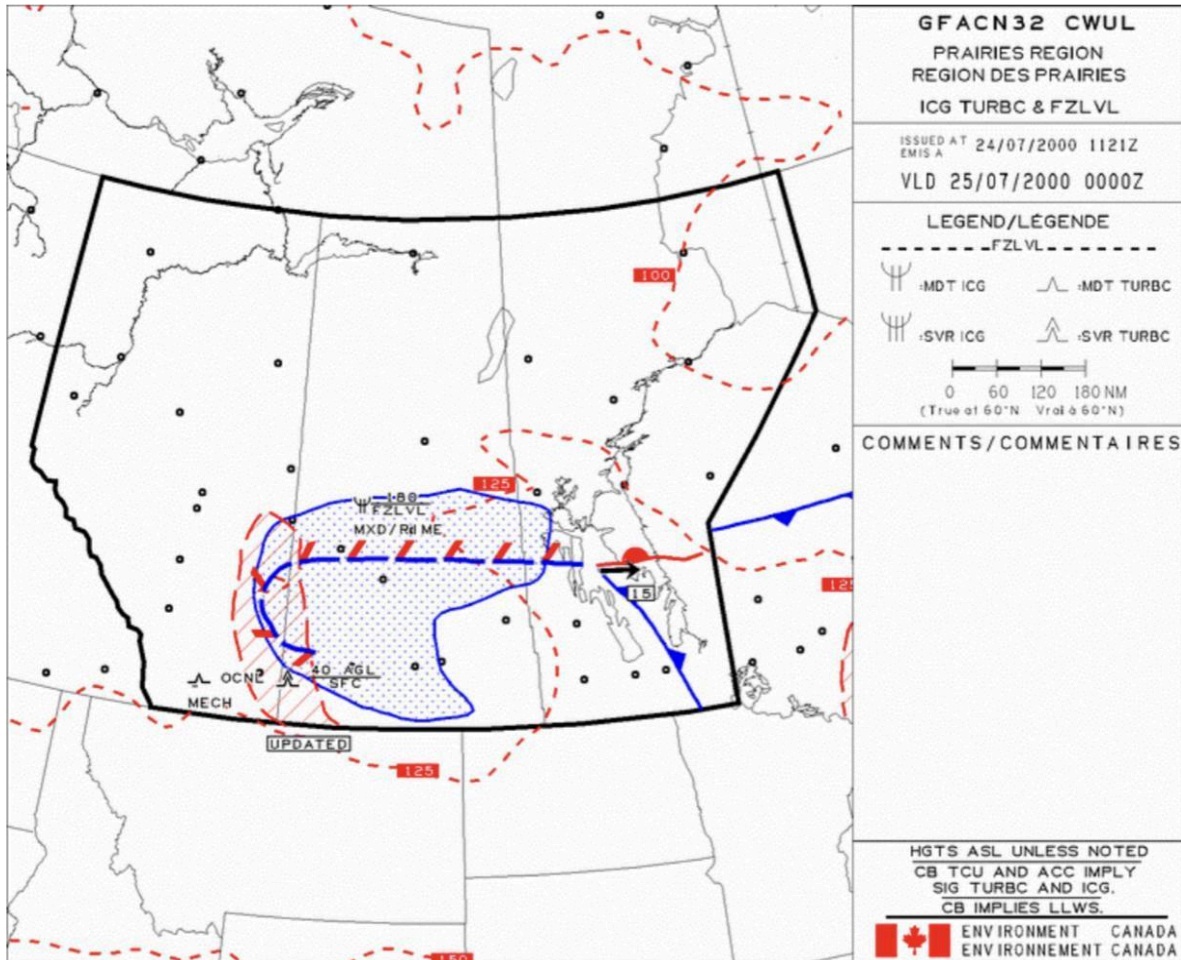
Appendix # 8

GFA (Page 4 of 6)

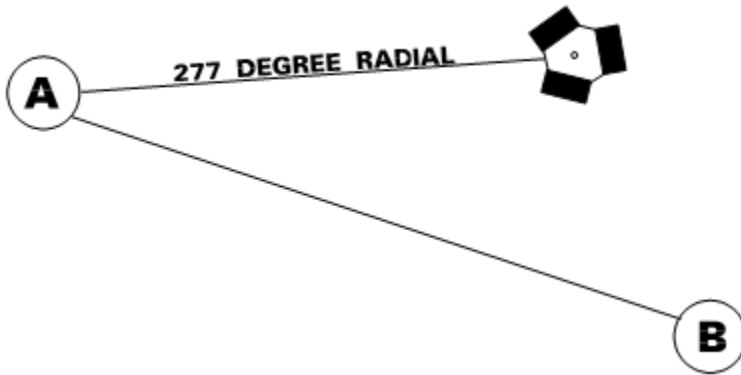


Appendix # 8

GFA (Page 6 of 6)



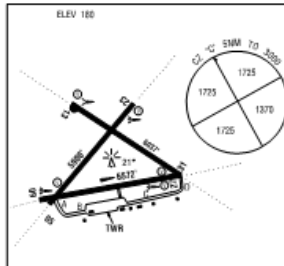
Appendix # 10



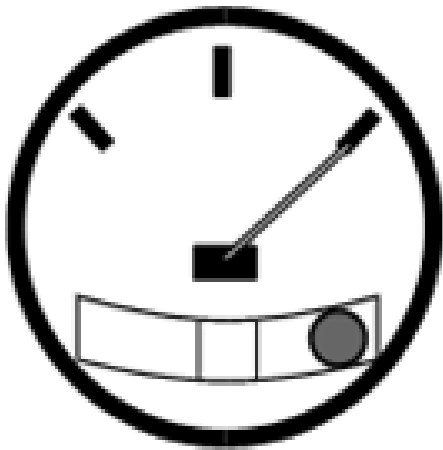
Appendix CPHEL Written Exam

Appendix # 11

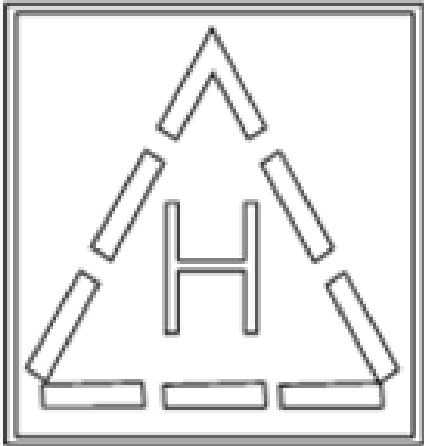
SEPT-ÎLES QUE		CYZV
REF	N50 13 27 W66 15 58 4.5E 23°W UTC-5(4) ELV 180' A5010 E-19 F-22 LE1 LE9 HE4 CAP	
OPR	TC 418-962-8211 Cert	
PF	A-1,2,3,6 C-4,5	
CUST	AOE-XA 418-962-2632 13-05Z (DT 12-04Z) Mon-Fri exc hols; 13-21Z (DT 12-20Z) Sat; O/T a svc chg will be levied. At all times 1 hr PNR	
FLT PLN	(bil) NOTAM FILE CYZV	
FSS	(F) 418-962-8229 or 800-463-1784	
WX	W1 418-962-8524 1015 -22Z (DT 0915-21Z) Mon-Fri O/T W2.	
SERVICES	Call out charge may be levied for one or more svcs 100LL, JB, HPR (CON I JB with FSII) All S 1,2,4,5,6 CFR 4 11-03Z (DT 10-02Z) O/T 1 hr PRN JASU Elect Start 10/15 SUP FL D & A-ice PVT ADV Shell agent 123.0 11-02Z (DT 10-01Z) Mon-Fri, 13-23Z (DT 12-22Z) Sat-Sun, 418-962-3143 hg & courtesy car avbl. MIL CON Trans Sol Avn Svcs 418-968-8095 11-02Z (DT 10-01Z) Mon-Fri, 12-23Z (DT 11-22Z) Sat, 13-23Z (DT 12-22Z) Sun, O/T call out chg	
RWY DATA	Rwy 09(092°)/27(272°) 6572x200 asphalt Rwy 13(132°)/31(312°) 6037x200 asphalt Rwy 05(052°)/23(232°) 5900x200 asphalt Rough sfc. No win maint. RCR Opr JBI, Win maint 11-03Z. Twy E abandoned. PLR/PCN	
LIGHTING	05-AD(TE ME) V1, 09-AE(TE HI), 13-AD(TE ME) V1, 23-AD(TW ME) V1 27-AD AS(TE HI) V1, 31-AD(TE ME) V1	
COMM	(bil) RADIO 122.2 126.7 5680 ATIS English 124.8; French 120.6 1115-0315Z (DT 1015-0215Z) GND 121.9 1115-0315Z(DT 1015-0215Z) TWR 118.1 236.6 135.55R (E) 1115-0315Z (DT 1015-0215Z) MF rdo 118.1 0315-1115Z (DT0215-1015Z) 5NM 3000 ASL PAL Montreal Ctr 135.55 381.9 (Below FL290) Moncton Ctr 132.15 133.35 368.5 (FL 290 and above) VDF 118.1 118.3 121.9 122.2 126.7 (V)	
NAV	VOT 115.7 ILS IZV 109.5 (Rwy 09/27) RVR NDB ZV 273 (M) N50 12 14 W66 09 05 310° 4.1NM to A/D Z 354 (LZ) N50 12 44 W66 18 01 093° 0.9NM to A/D VOR YZV 114.5 N50 13 56 W66 16 26 at A/D TACAN UZV 114.5 Ch 92 N50 13 26 W66 15 58 (169°) at A/D	



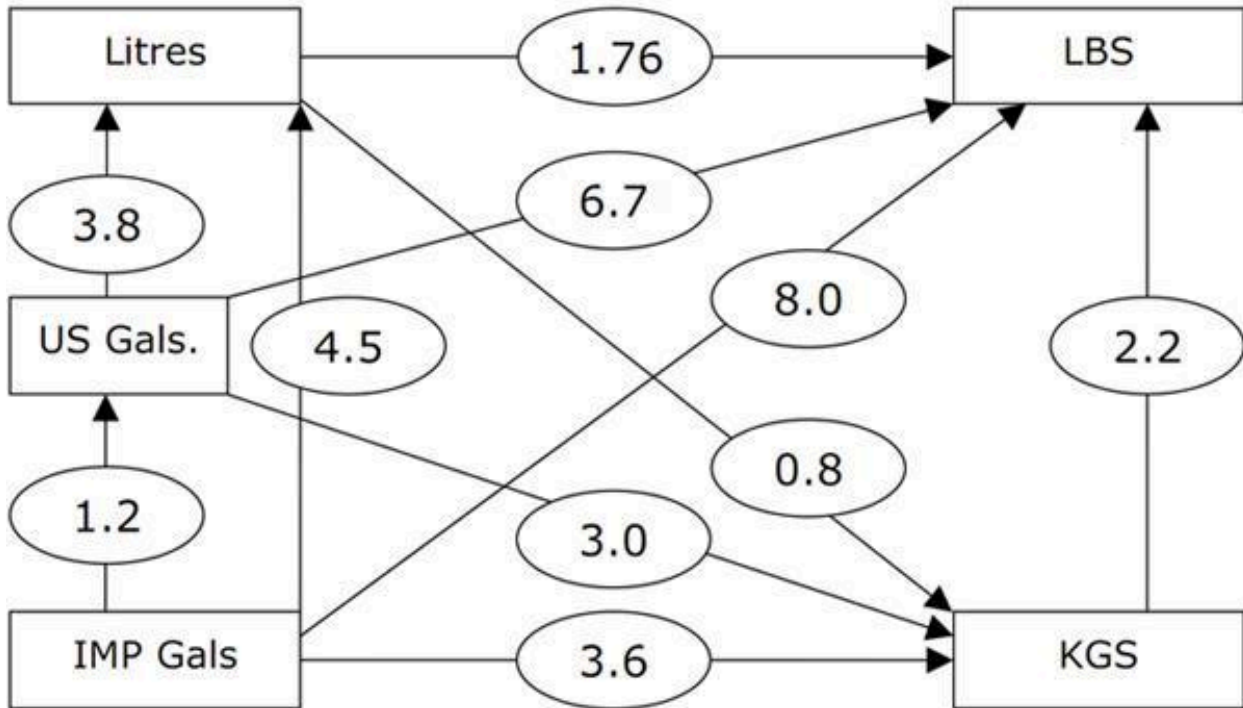
Appendix # 12



Appendix # 13



Appendix # 14



Appendix # 15

METAR CYVR 172300Z 08005KT 3/4SM -SN BLSN BKN008 OVC040 M05/M08 A2992 REFZRA
RMK SF5NS3 SLP134

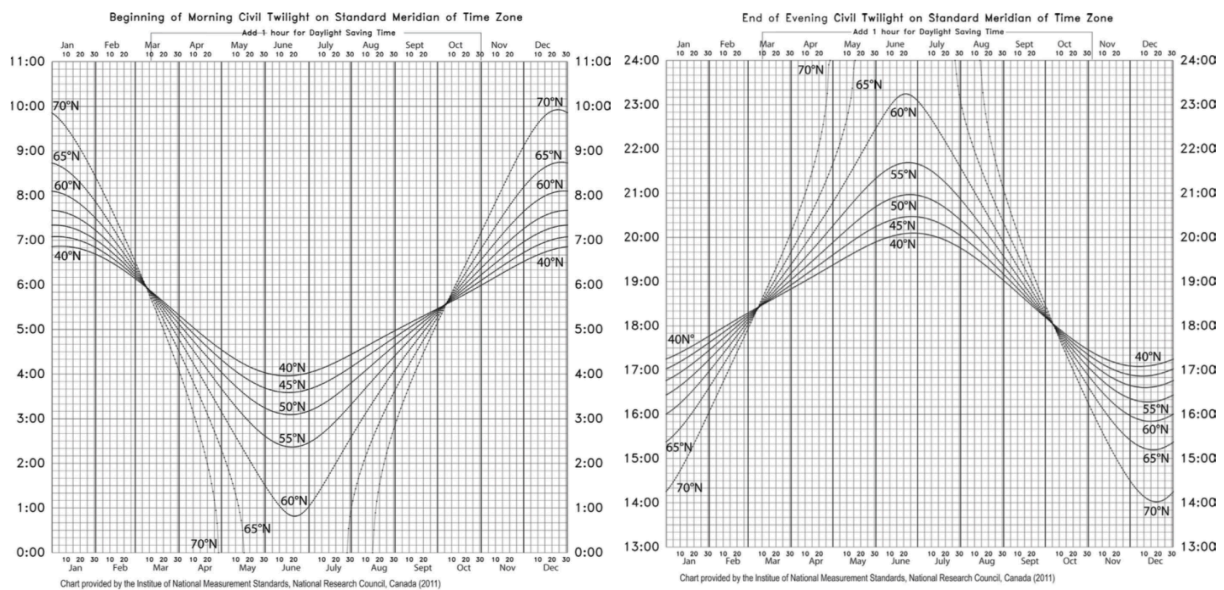
TAF CYVR 171942Z 172017 06005KT 3SM -RA BR SCT005 OVC015 TEMPO 2204 27015KT 1 2 SM
RA BR OVC006 FM0400Z 5SM -SHSN SCT005 RMK NXT FCST BY 17Z

Appendix # 16

INSTRUCTIONS:

1. Start at the top or bottom of the scale with the appropriate date and move vertically, up or down to the curve of the observer's latitude.
2. From the intersection move horizontally and read the local time.
3. To find the exact zone or standard time, ADD 4 minutes for each degree west of the standard meridian, or SUBTRACT 4 minutes for each degree east of the standard meridian.

The standard meridians in Canada are: AST-60W; EST-75W; CST-90W; MST-105W; PST-120W



Appendix # 17

General Information Navigation Trip Cochrane – Checkpoint 1 & 2 – Kapuskasing

This portion of the examination is based on a flight from the **Cochrane Airport** with 3 passengers on board dropping the two passengers off at **Check Point 1** and the last at **Check Point 2**. From **Check Point 2** you then sling jet fuel drums back to **Kapuskasing Airport**.

A single engine helicopter is to be used for the flight. The flight is to be conducted in accordance with visual flight rules. The weather is considered to be above VFR minima for the duration of the flight.

The VFR Navigation Chart (VNC) for the Timmins area is provided and should be used to plan the trip.

The locations of the places needed for the trip are:

COCHRANE AIRPORT	N49 06 20 W81 00 49
CHECK POINT 1	N49 15 50 W80 23 30
CHECK POINT 2	N50 01 00 W79 44 00
KAPUSKASING AIRPORT	N49 24 50 W82 28 03

Distances are given in nautical miles and speeds are in knots.

The entire trip is flown at **3,500 Ft.**, with a 20 minute stop at your first check point.

Indicated airspeed is **95 knots.**

True Track for the first leg is **069°.**

Winds for the trip are **310°** at **20 knots.**

Temperature for 3,500 Ft. is **+20°C.**

Appendix CPHEL Written Exam



Flight Training • Charters

Fuel per hour is **175 lbs.** Jet B

Appendix CPHEL Written Exam

Appendix # 18

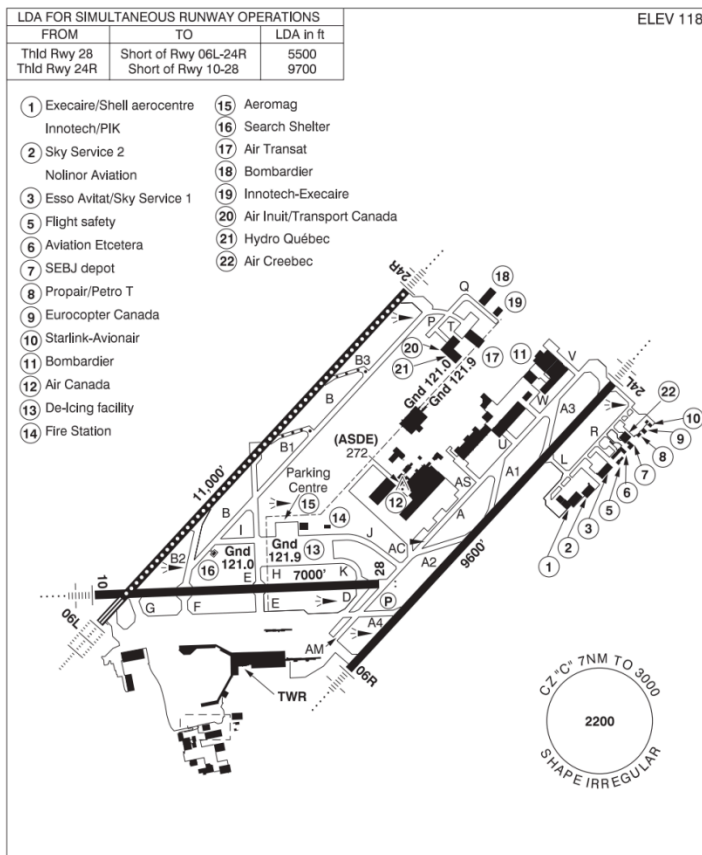
CANADA FLIGHT SUPPLEMENT / GPH 205

Effective 0901Z 17 August 2017 to 0901Z 12 October 2017

AERODROME/FACILITY DIRECTORY B663

MONTRÉAL / PIERRE ELLIOTT TRUDEAU INTL QC

CYUL



REF	N45 28 14 W73 44 27 Adj SW 15°W (2013) UTC-5(4) Elev 118' VTA A5002 LO6 LO7 LO8 HI5 T2 CAP OC
OPR	Aéroports de Montréal 514-633-3223 Cert Ldg fees
PF	A-1,2,3,4,6 C-5
CUST	AOE 888-226-7277
FLT PLN	(bil) NOTAM FILE CYUL
FIC	Québec 866-GOMÉTÉO or 866-WXBRIEF (Toll free within Canada) or 866-541-4105 (Toll free within Canada & USA)
ACC	Montréal 514-633-3211 or 800-633-1353. All Flt Plns, IFR tng flts PPR. Flt Plns by Fax at 514-633-2877 & include phone numbers where pilot can be reached prior to dep.
WX	METAR H24. TAF H24, issue times: 00, 03, 06, 09, 12, 15, 18, 21Z.

Appendix # 19

METAR CYUL 161700Z 15002KT 15SM OVC050 05/03 A3010 RMK SC8 SLP194=

SPECI CYUL 161656Z 15010KT 15SM OVC050 RMK SC8=

SPECI CYUL 161624z 15011KT 15SM - SHRA OVC050 RMK SC8=

** METAR CYUL 161600Z 15011KT 15SM OVCO52 04/03 A3013 RMK SC8 SLP204=

**** METAR CYUL 161500Z 15012KT 15SM BKN050 OVC075 04/03 A3014 RMK SC5AC3
SLP207=

METAR CYSC 161700Z 19005KT 10SM BKN020 BKN150 04/M00 A3015 RMK SC6AC2 SLP221=

** METAR CYSC 161600Z 19011KT 10SM BKN020 04/M01 A3016 RMK SC7 SLP227=

**** METAR CYSC 161500Z 16005KT 10SM BKN020 03/M01 A3018 RMK SC7 SLP234=

METAR CYZV 161700Z 11009KT 1SM - SHSN OVC004 M01/M02 A3021 RMK SN4SF4 SLP235=

SPECI CYZV 161643Z 10010KT 1SM - SHSN OVC007 RMK SN4SF4=

** METAR CYZV 161600Z 11010KT 4SM - SHSN OVC008 M01/M02 A3025 RMK SF8 SLP247=

** SPECI CYZV 161534Z 12007KT 4SM - SHSN OVC007 RMK SF8=

**** METAR CYZV 161500Z 11008KT 3SM - SHSN SCT008 OVC012 M01/M02 A3029 RMK
SN1SF3SC4 SLP262=

TAF CYUL 161625Z 161717 15012KT P6SM SCT012 BKN030 OVC080 TEMPO 1723 6SM - SHRA
BKN012 OVC025

FM2300Z 16008KT P6SM SCT015 OVC020 TEMPO 2312 3SM - SHRA BR BKN006 BKN015

FM1200Z 09008KT P6SM -RA SCT015 OVC025 TEMPO 1217 3SM -RA BR BKN012 OVC020

RMK NXT FCST BY-20Z=

TAF CYZV 161621Z 161717 11010KT P6SM OVC030 TEMPO 1703 3SM -SHSN OVC007 RMK NXT
FCST BY 23Z=

TAF CYSC 161627Z 161705 18010KT P6SM SCT012 OVC020 TEMPO 1723 6SM -SHRA OVC012

FM2300Z VRB05KT P6SM SCT010 BKN015 TEMPO 2305 3SM -SHRA BR BKN008 OVC015

RMK NXT FCST BY 23Z=

Appendix # 20

General Information Navigation Trip Elliot Lake – Sudbury – Parry Sound

You are flying a helicopter with a cruise speed of **95 kts.** You depart **Elliot Lake** and fly direct to **Sudbury** at **5,500 Ft.** At **Sudbury** you pick up a slingload and fly at **2,000 Ft.** direct to **Parry Sound Airport**. Allow yourself 10 minutes of operating time at Sudbury to pick up the slingload. Your cruise speed with a sling load is **70 kts.**

The locations of the places needed for the trip are:

Elliot Lake	N46 21 06 W82 33 40
Sudbury	N46 37 32 W80 47 52
Parry Sound Airport	N45 15 27 W79 49 47

Distances are given in nautical miles and speeds are in knots.

Winds for the trip are **200°** at **20 knots.**

Fuel per hour is **42 liters.**

Conditions are a standard day.

*Nav. trip also employs adding 2 minutes per 1,000 Ft. of climb to trip time.

Appendix CPHEL Written Exam



Flight Training • Charters

Appendix # 21

CANADA FLIGHT SUPPLEMENT / GPH 205

Effective 0901Z 17 August 2017 to 0901Z 12 October 2017

AERODROME/FACILITY DIRECTORY B1007

SUDBURY ON

CYSB

REF	N46 37 32 W80 47 52 11NE 11°W UTC-5(4) Elev 1143' A5000 A5001 LO4 HI4 HI5 CAP	
OPR	Muni 705-693-2514 Cert	
PF	A-1,2,3,6 C-4,5	
CUST	AOE/15 888-226-7277 1330-2130Z± Mon-Fri exc hols	
FLT PLN	NOTAM FILE CYSB Pilots to open/close VFR flt plan with London rdo, FISE or by phone.	
FIC	London 866-WXBRIEF (Toll free within Canada) or 866-541-4104 (Toll free within Canada & USA)	
WX	METAR H24. TAF H24, issue times: 02, 08, 14 & 20Z.	
SERVICES	Call out chg may be levied for one or more svcs. 100LL, JA-1 (FSII avbl), HPR	
FUEL	All	
OIL	1,2,3	
S	DESIGNATED CAT 6 sked flts. CAT 5 1100-0400Z±, O/T aprt clsd to acct 20 seats & abv, exc for diversions or as an altn A/D, without PPR.	
ARFF	D & A-ice	
SUP FL	Northern Aviation Services/Shell 122.95 705-693-2972 10-01Z± Sun-Fri, 10-23Z± Sat Sat 24 hrs 705-671-6945; Mara-Tech Aviation Fuels/Esso 122.35 0900-0100Z± O/T 705-693-5346 or 705-822-6360 Fax 705-699-1324	
PVT ADV	Northern Aviation Services (Shell) 705-693-2972	
MIL CON		
RWY DATA	Rwy 04(040°)/22(220°) 6600x150 asphalt Rwy 12(116°)/30(296°) 5000x150 asphalt Rwy 12 Up 0.3% Rwy 04 RVR 1200(1/4sm)/Rwy 22 RVR 1200(1/4sm)	
RWY CERT	FSS CRFI/RSC avbl 11-04Z± no win maint 04-11Z± O/T call out chg, 2 hrs PN. PLR/PCN	
RCR		
LIGHTING	04-AO(TE HI) P2, 22-AN(TE HI), 12-AO(TE ME) P2, 30-AO(TE ME) P2	
COMM		
RADIO	125.5 (V) (emerg only 705-693-3661)	
RCO	London rdo 123.475 (FISE) 126.7(bcst)	
ATIS	127.4	
CLNC DEL	121.8	
MF	rdo 125.5 7NM 4000 ASL (CAR 602.98)	
PAL	Toronto Ctr 135.5	
VDF	125.5	
NAV		
NDB	SB 362 (M) N46 38 53 W80 55 22 NORANDA ZSB 344 (L) N46 41 00 W80 44 57	
VOR/DME	YSB 112.3 Ch 70 N46 37 45 W80 47 54 (1171')	
ILS	ISB 110.3 (Rwy 22) RVR	
PRO	Rgt hand circuits Rws 22 & 30 (CAR 602.96).	
CAUTION	Extv float/ski/helicopter tfc in vic Azilda, ATF 122.8 and Coniston A/D 8NM S, ATF 123.0.	

SUDBURY FSS-RCO

London 119.4 (RAAS) 0345-1120Z± (N43 01 W81 09)

Appendix # 22

TAF CYSB

101745Z 101818 30003KT P6SM SCT050 BKN 070 FM2230Z 24007KT P6SM

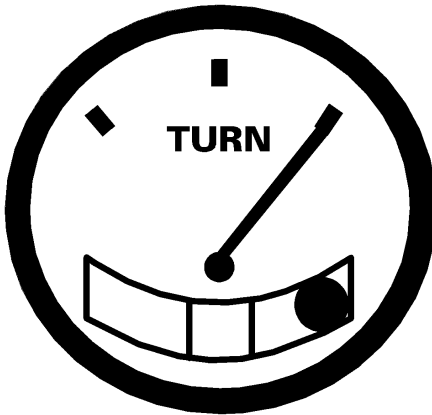
BKN100 SCT250 TEMPO 2204 SCT100 BKN250 FM0400Z 24010KT P6SM SCT050 BKN100

PROB40 0411 27020G30 2SM TSRA BKN 005 CB OVC 020 FM1100Z 24007KT P6SM SCT100

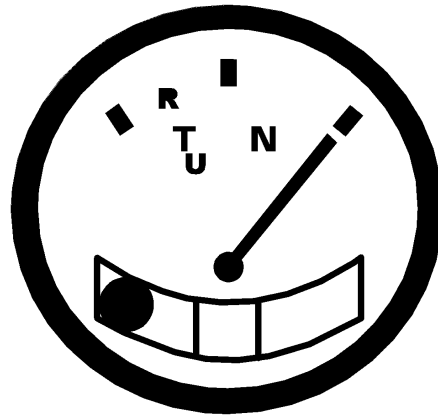
SCT250 RMK NXT FCST BY 00Z

Appendix # 23

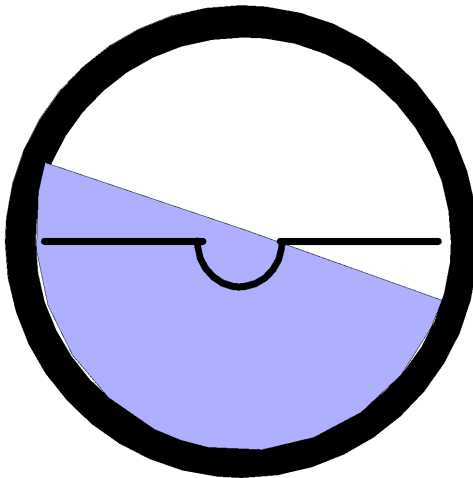
A.



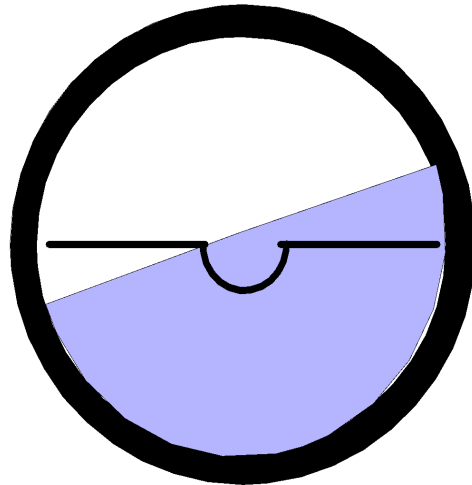
B.



C.



D.



Appendix # 24

General Information Navigation Trip Clarenville – Deer Lake – Great Harbour Deep

This portion of the exam is based on a flight from **Clarenville** with a stop at **Deer Lake** to pick up a passenger, then to continue to **Great Harbour Deep**. This trip has been selected to test navigational knowledge both on and off airways.

A Bell 206 Long Ranger is to be used for the flight. The flight is to be conducted in accordance with visual flight rules. The weather is considered to be above VFR minima for the duration of the flight.

The VFR Navigation Chart (VNC) for the Gander area is provided and should be used to plan the trip.

The locations of the places needed for the trip are:

CLARENVILLE	N 48 10 00 W 53 58 00
DEER LAKE	N 49 12 39 W 57 23 29
GREAT HARBOUR DEEP	N 50 22 40 W 56 31 30

Distances are given in nautical miles and speeds are in knots.

True airspeed is **95 knots**.

Winds for the trip are **270°** at **10 knots**.

Fuel per hour is **24.0 U.S.** gallons.

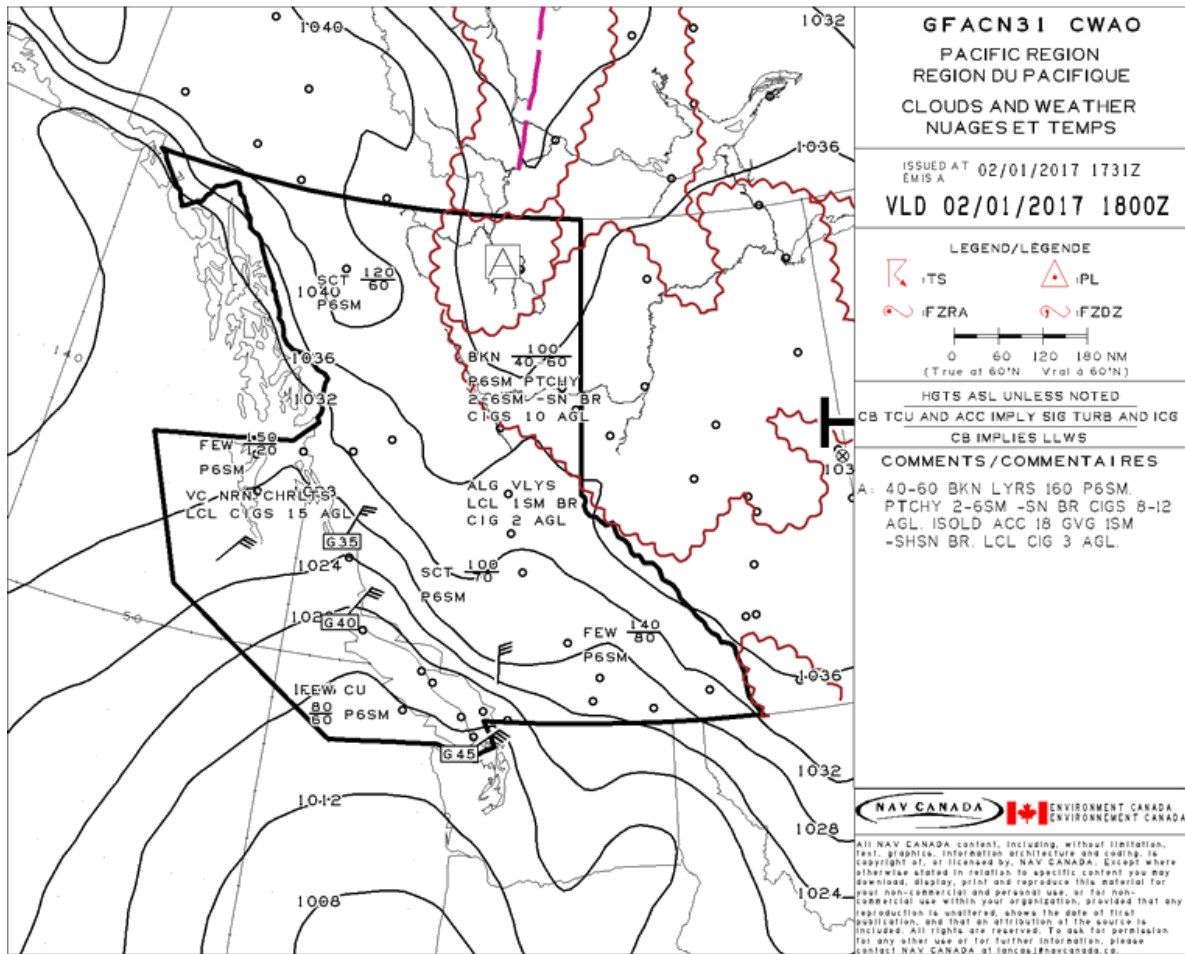
Appendix CPHEL Written Exam



Flight Training • Charters

Appendix # 25

GFA (Page 1 of 3)



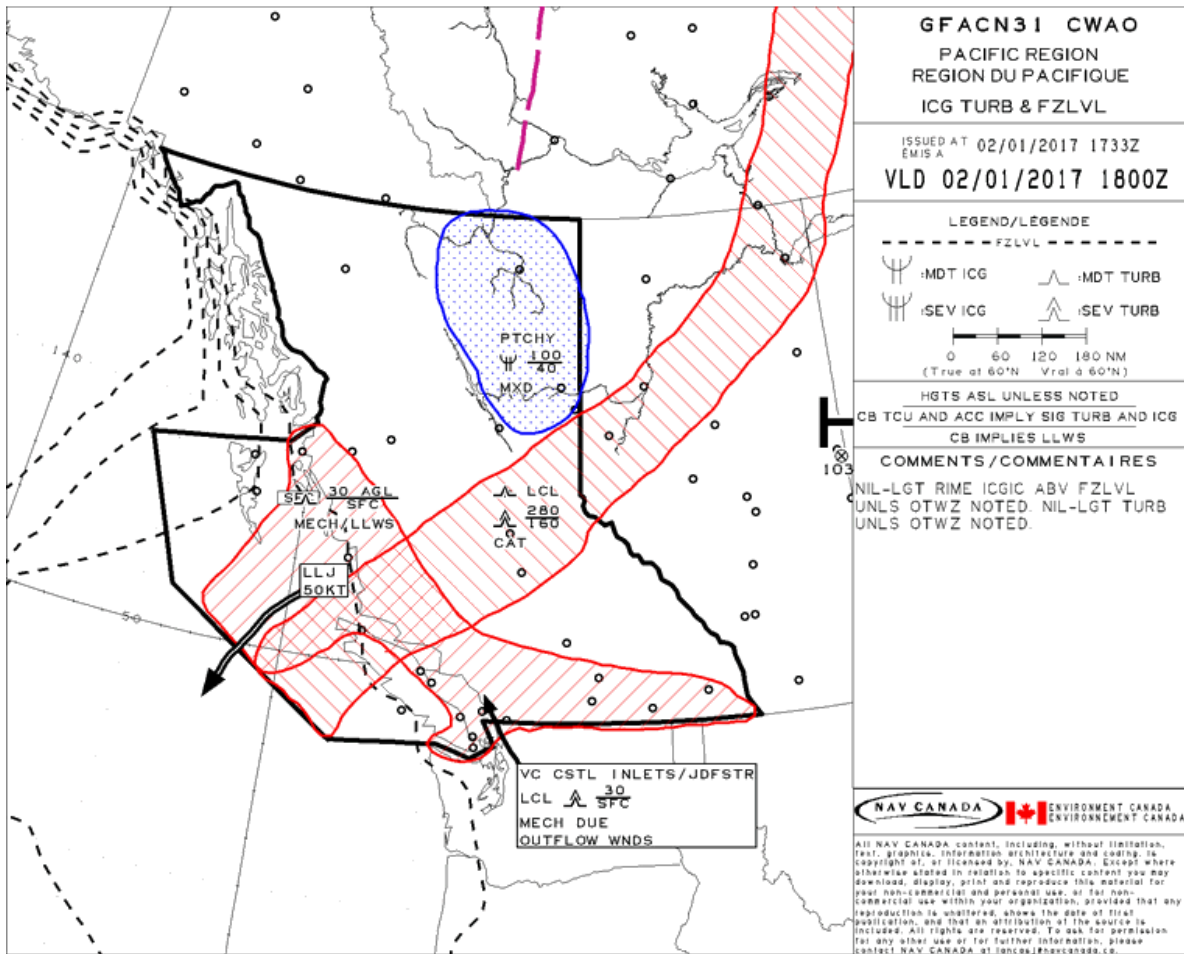
Appendix CPHEL Written Exam



Flight Training • Charters

Appendix # 25

GFA (Page 2 of 3)



Appendix # 25

METAR/TAF (Page 3 of 3)

METAR CYXX 022200Z 03022G29KT 30SM FEW120 FEW210 M01/M14 A3011 RMK
AC1CI1 AC TR CI TR DRSN SLP202=

SPECI CYXX 022111Z 03021G30KT 30SM FEW120 FEW220 M02/M14 A3010 RMK
AC1CI1 AC TR DRSN SLP197=

METAR CYXX 022100Z /////KT 30SM FEW100 FEW220 M02/ A3010 RMK AC1CI1
AC TR DRSN SLP198=

METAR CYXX 022000Z 03024G31KT 30SM FEW120 FEW210 M02/M15 A3011 RMK
AC1CI1 AC TR DRSN SLP199=

TAF CYXX 021738Z 0218/0318 04022G35KT P6SM FEW120
RMK NXT FCST BY 030000Z=

Appendix CPHEL Written Exam



Flight Training • Charters

Appendix # 26

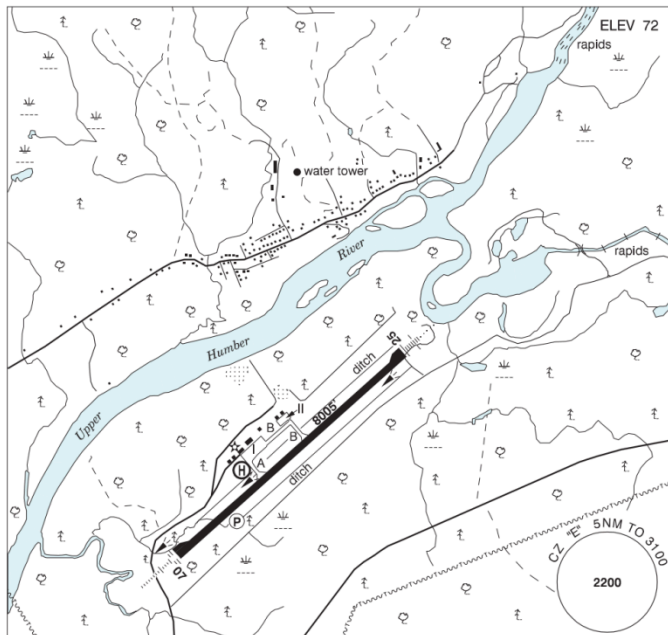
CANADA FLIGHT SUPPLEMENT / GPH 205

Effective 0901Z 12 October 2017 to 0901Z 07 December 2017

AERODROME/FACILITY DIRECTORY B229

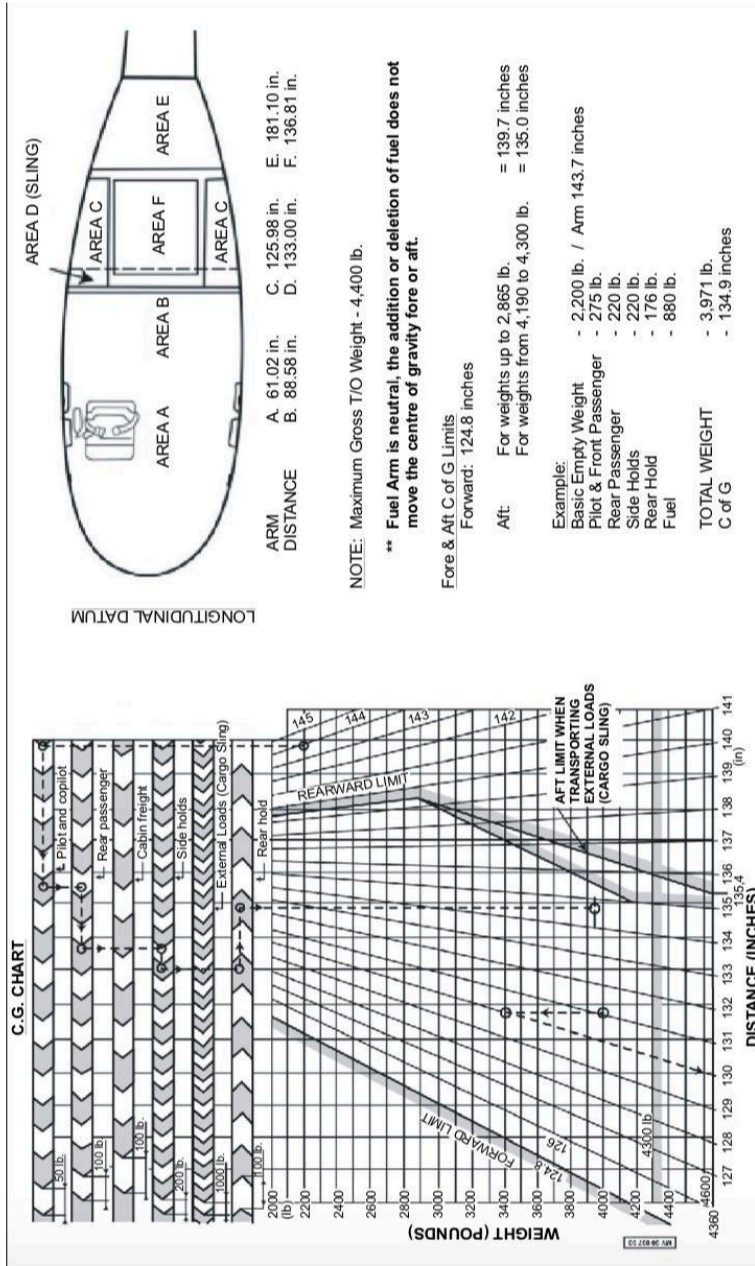
DEER LAKE NL

CYDF



REF	N49 12 33 W57 23 40 3NNE 20°W (2013) UTC-31/2(21/2) Elev 72' A5011 A5012 LO8 HI6 CAP
OPR	Deer Lake Regional Airport Authority Inc. 709-635-3601 Cert
PF	A-1,2,3,6 C-4,5
CUST	AOE/120 (250 with staged off-loading) 888-226-7277 1830-0230Z± Mon-Fri, Feb 1-May 30; 1130-1930Z± Mon-Fri, Jun 22-Sep 30; AOE/15 H24
FLT PLN	NOTAM FILE CYDF
FIC	London 866-VXBRIEF (Toll free within Canada) or 866-541-4104 (Toll free within Canada & USA)
ACC	(IFR only) Gander 709-651-5225 or 888-751-5225.
WX	METAR H24. TAF H24, issue times: 02, 08, 14, 20Z.
SERVICES	
FUEL	100LL, JA-1
OIL	All
ARFF	DESIGNATED CAT 6 (CAT 7 30 min PN) 0830-0430Z±, O/T call out chg.
PVT ADV	Nalair 122.85 709-635-3574 Fax 709-635-3901 Woodward Aviation 709-635-3776
MIL CON	Woodward's Oil Limited 709-635-3776

Appendix # 27



Appendix CPHEL Written Exam



Flight Training • Charters